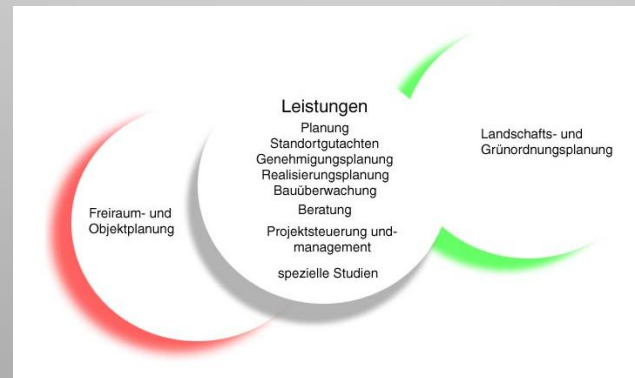


Competence in Urban Planning, Landscape Architecture and Leisure Activities

Deutsche Golf Holding LTD

GOEP LA Limited



Contact: Deutsche Golf Holding Ltd // D 45359 Essen // Aktienstr. 177 // Germany
fon +49 201 25881 // fax +49 201 250888 // mobil +49 171 3158371 // email
goep.dgc@cityweb.de // web golf www.golfholding.com // web ls www.goep-la.de



Rainer Preißmann
Project Management and Senior Landscape Architect
Member of the Chamber of Architects NRW
Member of the Chamber of Architects Prague R00 051

Summary of Work Experiences

Independent professional activity since 1973
 Since 1978 working as Golf Course Architect
 Since 2005 Managing Director GOEP LA Ltd
 Since 2005 Managing Director Deutsche Golf Holding

Special experience

Project Development / Project Site Analyses
 Golf Course and Resort Architecture
 Urban Planning and Permission Planning

Lectures At European Universities, Sports and Leisure / Congresses,
 Conferences on Golf and Sports Exhibitions, / Diploma Course in Golf
 Course Design, Greenkeeper and Golfmanager Associations

Other activities Publications about Golf and Landscape in the national
 and international Golf Press / Chairman of the FLL Editorial Group for
 Guidelines for Golf Course Construction

Maximilian Frhr. Von Wendt
Project Organisation and Senior Landscape Architect
Member of the Chamber of Architects NRW

Summary of Work Experiences

1972-1975 Employed by Landscape Architect F.J. Greub
 Düsseldorf
 Since 1975 Self Employed as Landscape Architect, Kalkar.
 Since 1994 Part Owner of Deutsche Golf Consult, Essen
 Since 2005 Technical Director of Deutsche Golf Holding
 Since 2005 Managing Director of GOEP LA Ltd

Special experience

Landscape Architecture and Project Controlling
 Detail Planning and Construction Organisation
 Stormwater Management / Renovation and Irrigation Expert

Lectures on Sports and Leisure Congresses,
 Conferences on Golf and Sports Exhibitions
 Greenkeeper and Golf Course Manager Education

Other activities

Member of FLL Group for Guidelines for Golf Course Construction

Additional Staff as required: i.e. Detail Planner, CAD Designer, Visualisation, Ecologists, etc.



Presentation of GOEP LA Ltd and Deutsche Golf Holding Ltd

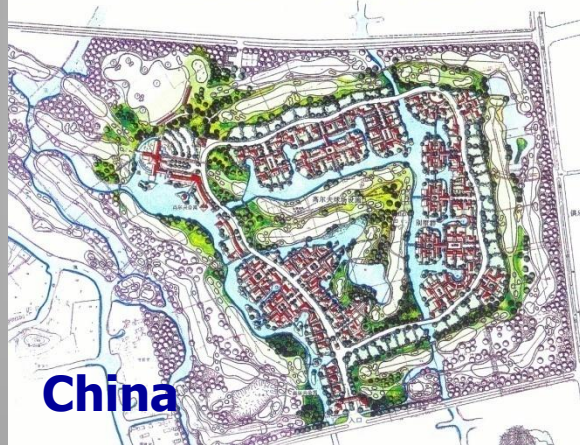
Experience

As Landscape Architects we are committed with urban and permission planning of golf resorts and other sports and leisure facilities since more than 30 years as well as for the planning and realization of the surroundings of buildings of each type.



Presentation of GOEP LA Ltd and Deutsche Golf Holding Ltd

HANGHAI SHESHAN GOLF PARK



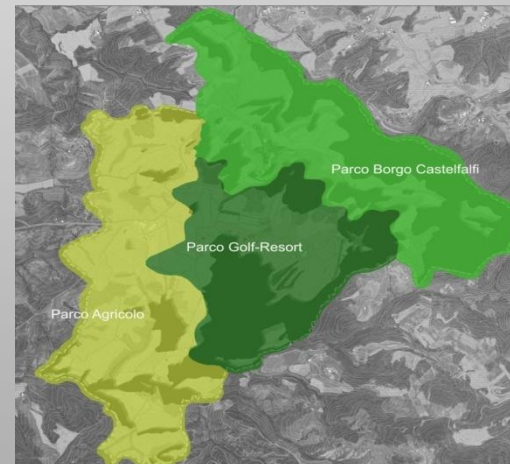
References

The following Examples are outstanding projects from our drawing board which are very similar to the situation in Royal Prague Country.

GCC Seddiner See



Resort Land Fleesensee



Tuscany Resort Castelfalfi



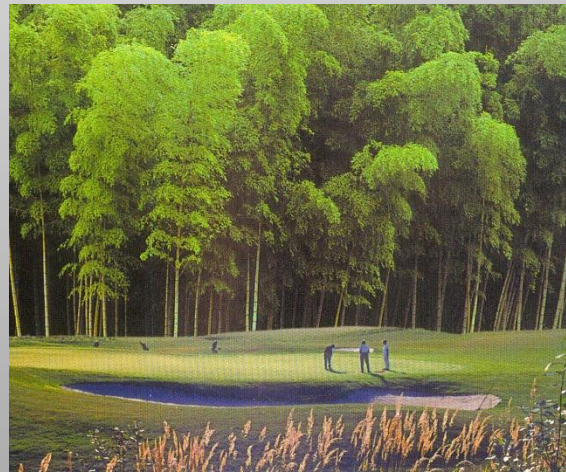
The Chinese Experience



Shanghai



Harbin



Fuxian Lake



Golf and Country Club Seddiner See, Berlin



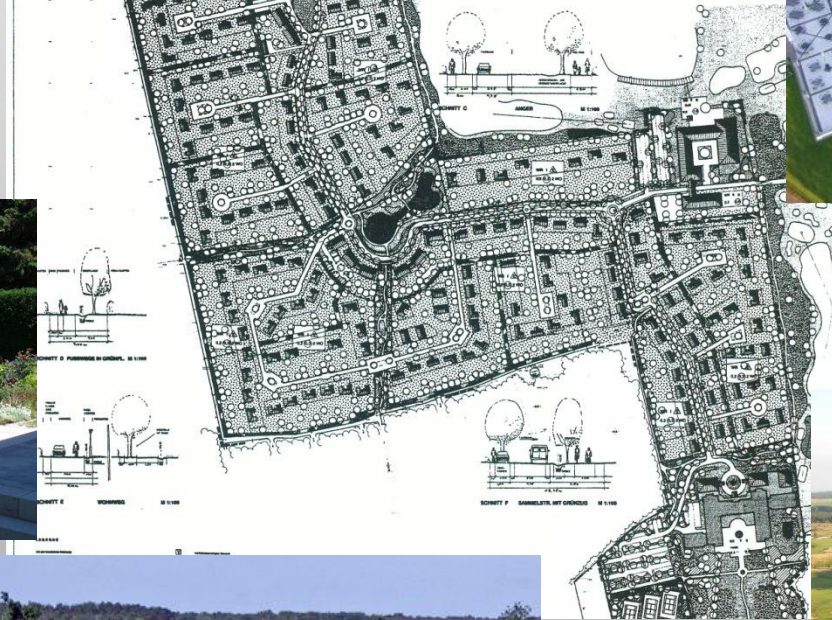
- 1990 a 200 ha large property was found beside the Seddiner See and after a 4 years permission period it was possible to build a combination of
- two 18 hole golf courses with practice facilities with a four hole short course
 - a comfortable club house with 30 apartments
 - 240 plots for individual villas
 - 100 apartments and
 - a five star country style hotel with 200 rooms.

Our office was responsible for the development and general permission planning of the whole complex and the building permission planning of the two golf courses as well as for the design strategy of the housing complex incl. surface water management.

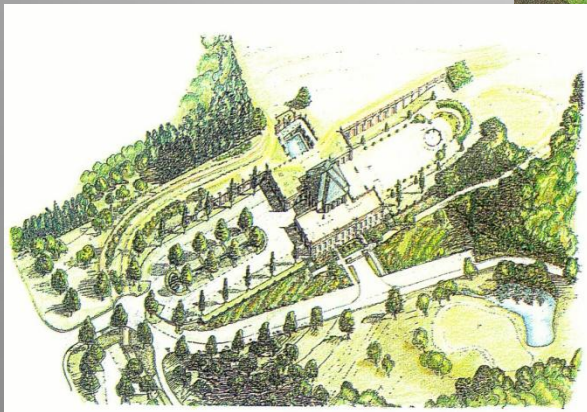
The south course was planned and supervised by Robert Trent Jones II, represented thru Kyle Phillips and Rainer Preißmann brought the north course and the practice facilities into play. The course was actual honoured by the German Golf Federation with the gold medal in the German wide program "Golf and Natur" for a special water cleaning system and the establishment of lots of biotopes of high quality.



Golf and Country Club Seddiner See



Golf and Country Club Seddiner See



Resort Land Fleesensee

The opening of the biggest golf and leisure resort in Germany was in May 2000 in one of the new federal states Mecklenburg-Vorpommern.

The resort contents

- three different types of hotels
- a spa and a centre for water activities at one of the lakes
- a riding stable
- a golf and tennis academy with
 - o three 18 hole golf courses
 - o two nine hole short course and
 - o a golfodrom.

Rainer Preißmann and his office were responsible for the project management, permission planning and supervision of the whole sports complex as well as for the planning of the System of maintenance roads, cart paths, bridges and shelters, biotope structure in and outside the golf courses incl. forest areas and wetland biotopes as compensation for protected birds on the complete 360 ha property.

The golf course architecture was done by EGD which whom we worked very close together. Additional we have been responsible for the landscape architecture of the golf and tennis academy with 300 parking plots, all terraces and surroundings of the organization building as well as for 9 tennis courts partly with artificial grass and a centre court and the seeding and planting of the accompanying park structures.



Resort Land Fleesensee

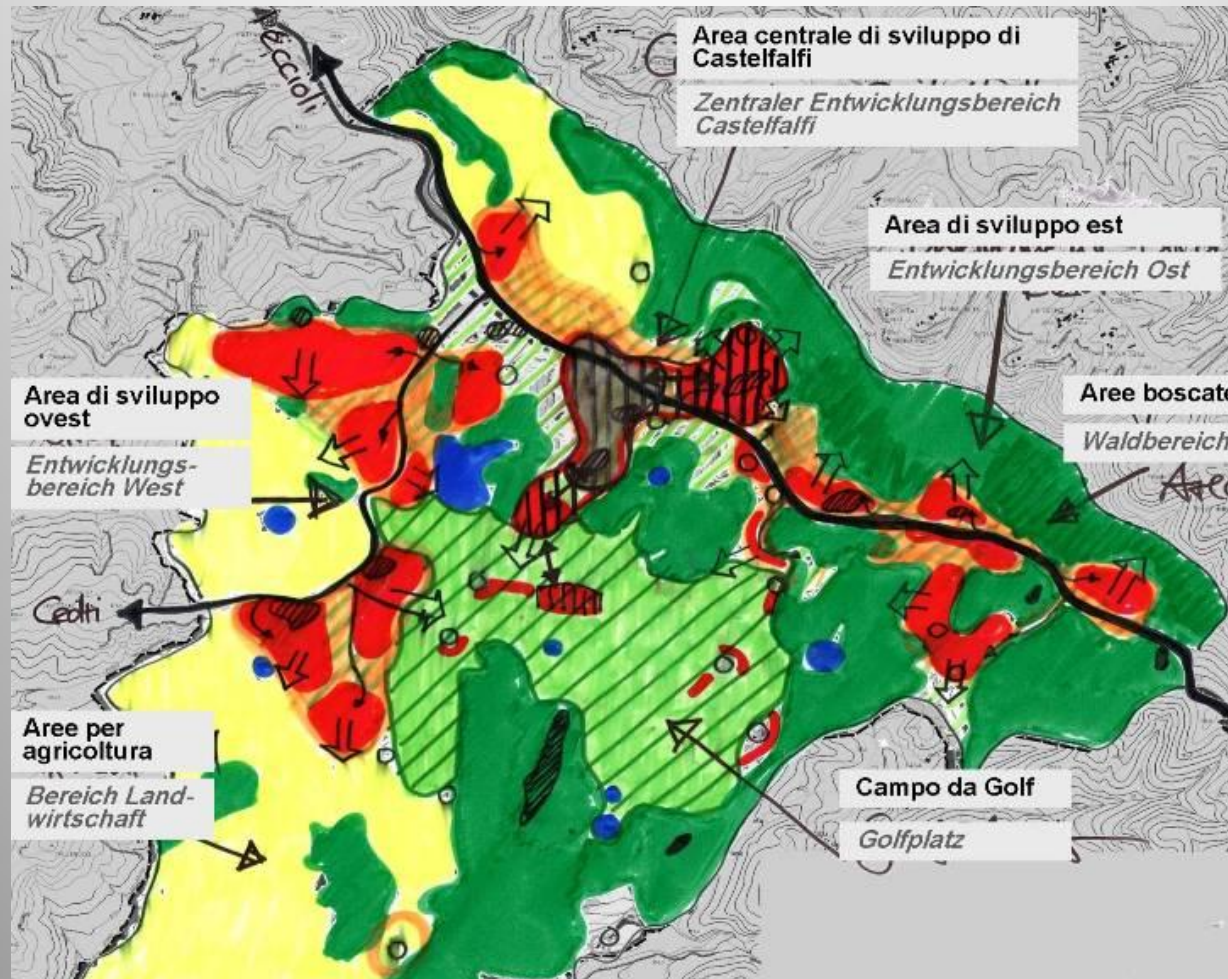
Golf- und Tennisakademie

Projektbeispiel: Golfresort Fleesensee, Golf- und Tennisakademie Schloss Blücher, (2000-01)

Leistungen: Beratung des Generalübernehmers, Entwurf, Gesamt-LBP, Genehmigungsplanung, Bepflanzungsplanung außer Golfspielflächen (Entwurf: European Golf Design)



Tuscany Resort Castelfalfi



Tuscany Resort Castelfalfi

A new golf and leisure resort is planned in Italy by the TUI group with a similar structure then the resort Fleesensee in Germany, but with the lucky situation of a very well known touristy landscape and a property of 1.100ha.

The project started in 2006 with the master planning and Rainer Preißmann was responsible for the golfing part of the project and the integration of golf into the historical landscape.

Main topics during the master planning process have been

- Common development of a touristy model
- Completion of the Site analyses
- Development of landscape and biotop structures
- Design principles for adjoining facilities and housing structures
- Support of the planning and building permissions during all levels.

The resort contents are

- three to four different types of hotels including a spa and conference centre
- housing areas and the renovation of 30 farm houses
- the renovation of an old village including a castle from the Middle Ages
- a golf and tennis academy with
 - o two 18 hole golf courses
 - o practice facilities and
 - o four tennis courts with an organisation building.

Rainer Preißmann and his company were responsible for the master planning as well as for the whole golf and landscape architecture of the sports complex incl. stormwater and surface water management, integration of public hiking and cycling trails and the access road.



Parco Golf-Resort



Parco Agricolo



Tuscany Resort Castelfalfi

Tipologie delle sommità *Typologien der Hochpunkte*

Sommità aperte / non strutturate_1
Offene / unstrukturierte Hochpunkte_1



Sommità abbandonate_2
Verlassene Hochpunkte_2



Sommità urbanizzate_3
Besiedelte Hochpunkte_3



Sommità boschive_4
Bewaldete Hochpunkte_4



Bosco misto
Laubmischwald



Bosco di pineta
Pinienforst



Pascolo pescugliato, macchia, garga
Buschvegetation mit Arten der Macchia



Uliveto
Olivenhain



Vigneto
Weinfeld



Strada alberata
Prägende Alleen



Campo da golf
Golfplatz

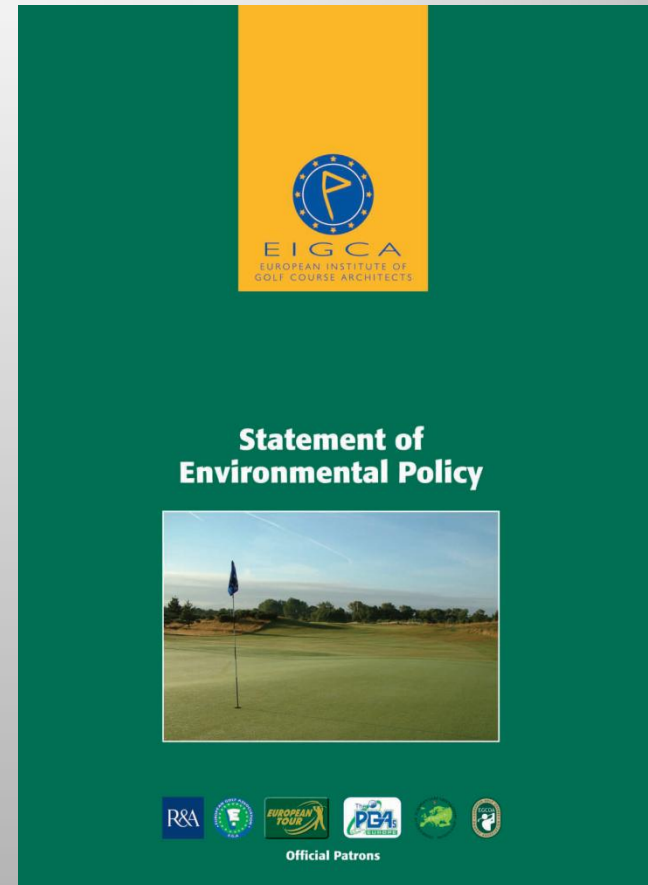


Tuscany Resort Castelfalfi



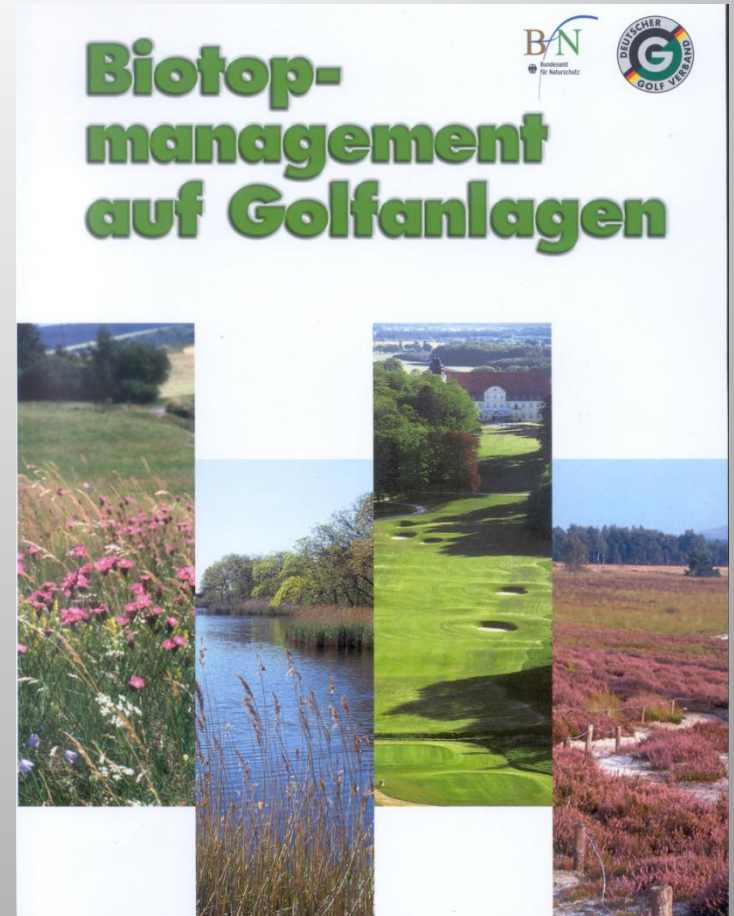
Discussion of Sustainability

- Biodiversity
- Landscape and Cultural Heritage
- Water Resources
- Soil protection
- Climate change
- Pollution prevention
- Energy Consumption and Waste Reduction
- Usage of local or recycled materials



Discussion of Sustainability

-Biodiversity



Tuscany Resort Castelfalfi

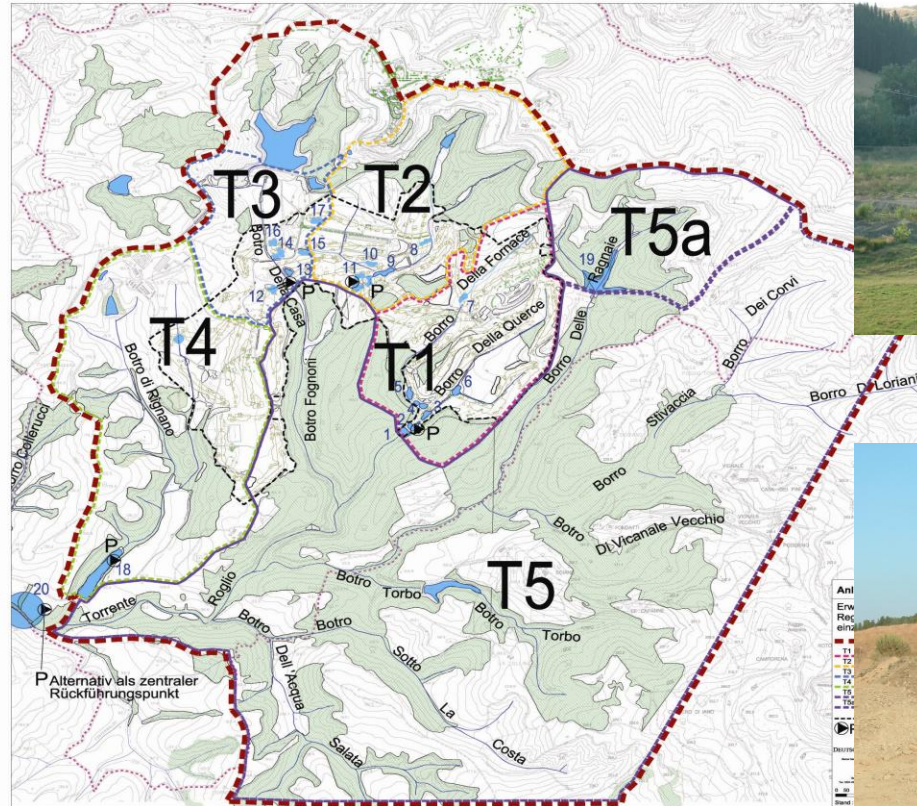
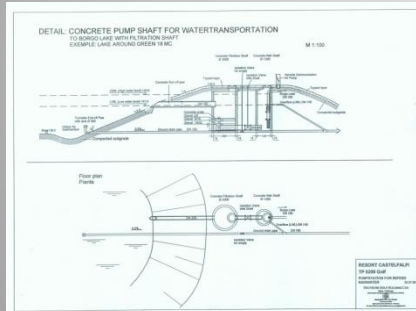
Landscape and Cultural Heritage

- Identify landscape character and the visual amenity of the site
- Identify archaeological, historical and cultural heritage value
- Seek to achieve the best fit with the existing situation
- conserve the elements of value and maximise opportunities for integration



Water resources

- Use intelligent methods to collect water in times with heavy rainfall for dry periods incl. optimising the ability to catch, channel, treat, detain and re-use surface run-off and sub surface drainage water



Water resources

Task and Realization



- Biodiversity
- Landscape and Cultural Heritage
- Water Resources
- Soil protection
- Climate change
- Pollution prevention
- Energy Consumption and Waste Reduction
- Usage of local or recycled materials

Tuscany Resort Castelfalfi

Ecological manual

- Building Climate
- Reduction of Energy Consumption
- Usage of renewable energy
- Waste water disposal
- Grey Water Management
- Usage of Potable Water
- Collection and Usage of Rainwater
- Waste reduction and disposal
- Green Covering of Buildings
- Landscape and Cultural Heritage

